

EMERGENCY PREPAREDNESS & RESPONSE HURRICANE PREPAREDNESS

WEDNESDAY, JULY 19, 2023, 6 PM CENTRAL

Tulane

PANELISTS:

Meredith Beers, PhD, MPH

Associate Director Business Continuity of Operations
Office of Emergency Preparedness & Response

Donald Veals, LEM

Assistant Director of Emergency Response Systems
Office of Emergency Preparedness & Response

MODERATOR:

Penny Wyatt

Director, Family Programs and External Relations
Division of Student Affairs

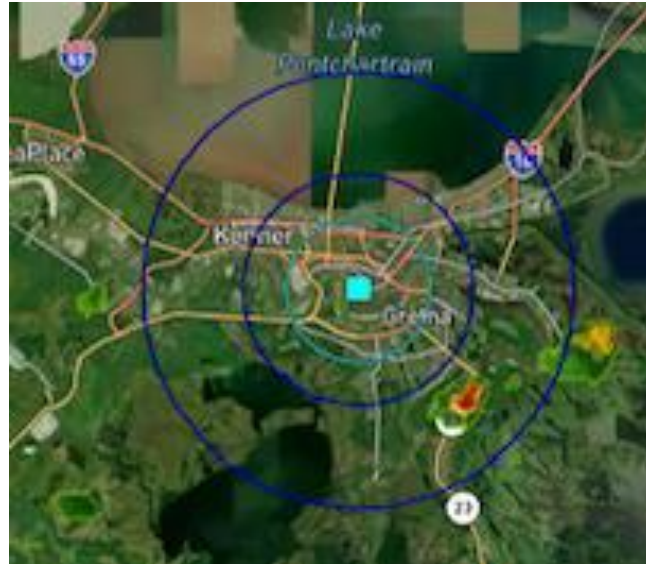
EMERGENCY PLANNING

- We help prepare, help prevent, and respond to incidents
- We prepare for all hazards
- Our plans are flexible and scalable
- Our number one goal is to protect the life safety of our students, faculty, and staff



ALL-HAZARDS PREPAREDNESS

- Each year we prepare for the most likely scenarios
- Example hazards:
 - Active shooter
 - Boil water advisories
 - Fire, bio/chemical spill
 - **Hurricanes**
 - Pandemics
 - Power outages
 - Severe weather
 - And much more!



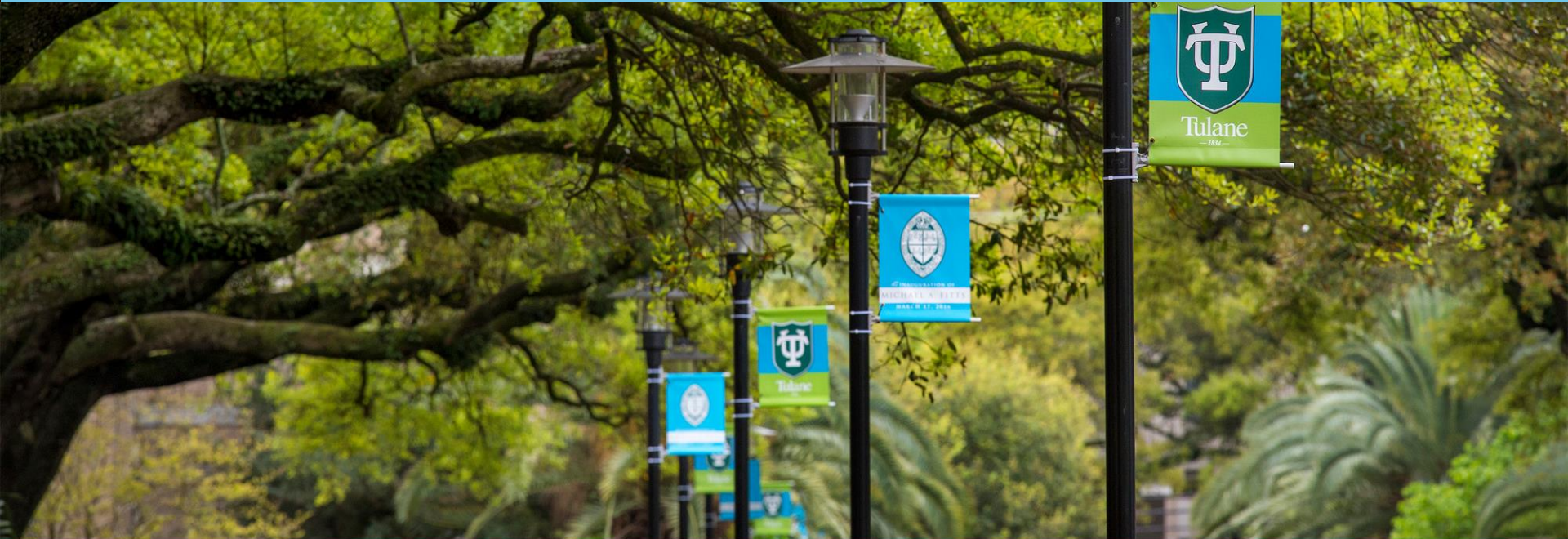
Tulane University: T U ALERT: A tornado WARNING has been issued for our area. Remain in/seek shelter in the nearest building immediately. nixle.us/DHAHA

Tulane University: T U ALERT: Tornado Warning All Clear nixle.us/DHAJ2



Stay safe in today's extreme heat!

Stay Connected to #beTUready



Tulane

HURRICANE COMMUNICATIONS WITH FAMILIES

Email



Emergency Website



Tulane Today



Social media: @TulaneU and @TulaneEmergency

HURRICANE COMMUNICATIONS WITH *STUDENTS*

PRIMARY METHODS

- Email (Tulane-assigned email address)
- Emergency website: <http://emergency.tulane.edu/>
- Mass Notification Communication System – “TU Alert”
 - Everbridge App (students should download this app)
 - Text Messages (students are automatically enrolled)
 - Email (students are automatically enrolled)

HURRICANE COMMUNICATIONS WITH *STUDENTS*

SECONDARY METHODS

- Housing & Residence Life and Dining Services will communicate with students via their Tulane email addresses
- Social Media
 - @TulaneEmergency on Facebook, Twitter & Instagram
- Students **must** follow directions from university officials, including Student Affairs & TUPD

TEXT ALERTS

- Your student should log into Gibson
- Look under “Records”
- Use the link to confirm or correct **their own** contact information (including cell phone number!)

Clearinghouse
Service Wave
Handshake
TULearn (Bridge)

Records
Schedule of Classes
Register (Add/Drop)
Course Evaluations
TU Enrollment Verification
View TU Enrollment Verification
Order an Official Transcript
Unofficial Transcript
Update Confidentiality Options
Update Address, Phone & Email
Update Emergency Contacts
Update Preferred First Name and/or Preferred Pronoun

Resources
Human Resources
Student Employment

View Online Account

- Account Activity & eBills
- Payment Options & History
- Refund Disbursement
- Authorized User Signup

Degree Works Audit
Academic Advisor: [Amanda Hassan](#)
Major Advisor(s): [Michael Wallace](#)
Degree: Master Professional Studies

[View Audit](#)

Attention Student Workers

Please take a moment to review/update your home address by December 31, for filing income taxes, is mailed to the correct address.

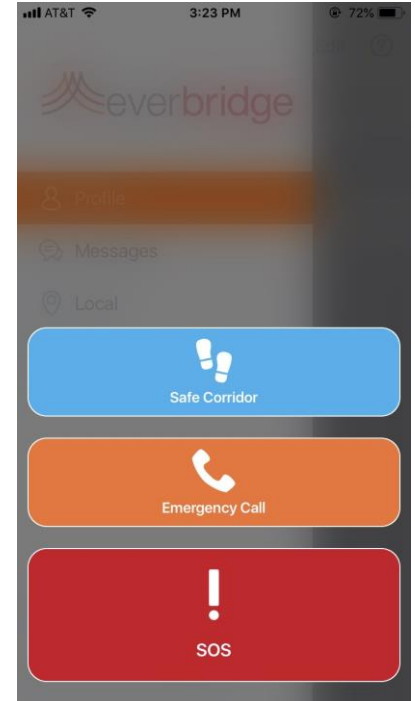
If your address is not up to date in our system, your W-2 will be mailed to an incorrect address.

To verify and update your mailing address, please use the link <https://ebs.tulane.edu>

EVERBRIDGE APP



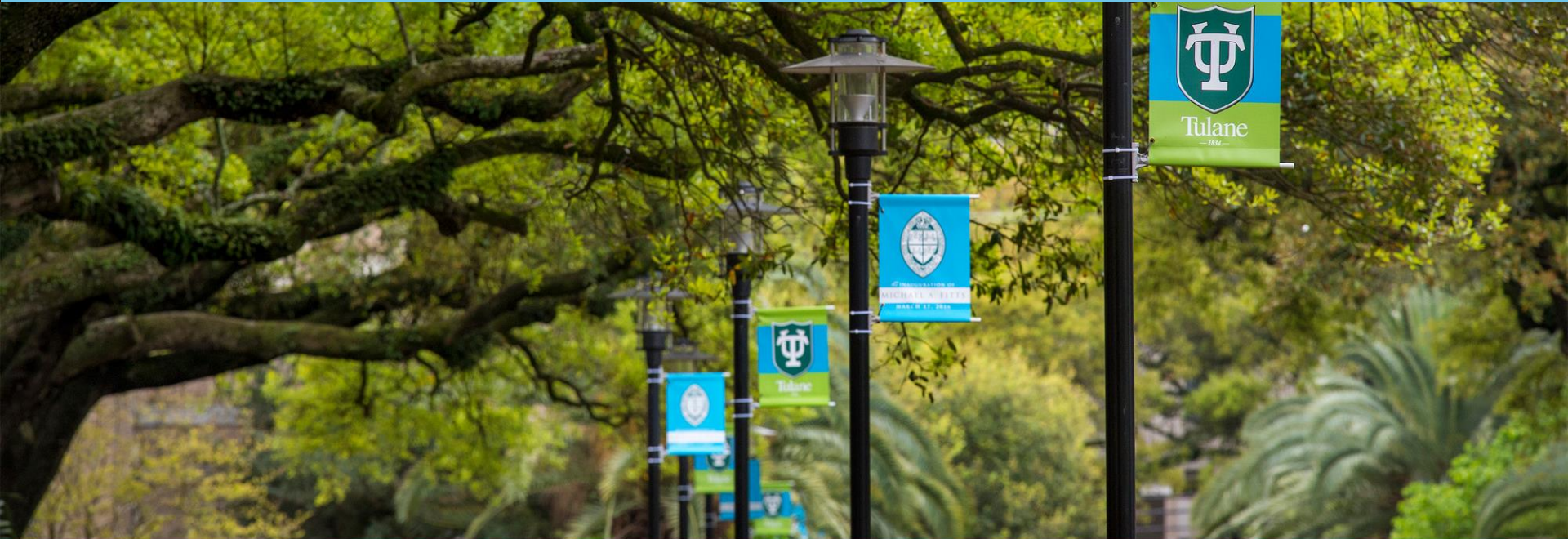
- Available in the Apple and Android store
- Free to Tulane students, faculty, and staff who have a tulane.edu login
 - Family members, this won't work for you
 - ****please note that your student will not be able to log in until move-in*
- Additional safety features:
 - Safe Corridor
 - Emergency Call
 - SOS



OPT-IN ALERTS DURING MOVE-IN

Text TUMoveIn to 888777

Hurricane Preparedness



HURRICANE 101

Hurricane season: June 1 – November 30

Atlantic Ocean –

- See these form 7+ days before landfall
- ~5 days before landfall start to have a good sense of the storm's projected path

Gulf of Mexico –

- See these form ~4 days before landfall
- Decision to close and evacuate or close in shelter in place made as soon as possible once projected path forecast



HURRICANE 101

Hurricane Hazards

- High winds
- Storm surge
- Heavy rainfall and inland flooding

Hurricane Impacts

- Power outages
- Loss of internet service
- Water & sewerage pumping station problems resulting in boil water advisories
- Flooding
- Supply chain disruption/interruption
- Fuel shortages



WHAT WILL TULANE DO?

Close and Shelter in Place

- *Transition to online/remote classes or cancel classes, cease normal business operations, and shelter on-campus residents in their residence halls*
- *Expected impacts to New Orleans and Tulane are manageable*

We will run shuttles to the airport

Close and Evacuate

- *Cancel classes, cease normal business operations, and everyone MUST evacuate*
- *Expected impacts to New Orleans and Tulane are significant*
 - *We can declare a mandatory evacuation even if the City of New Orleans does not*

We will run shuttles to the airport

Continue Normal Operations

- *Storm forecast area does not include New Orleans*
- *No expected impacts to New Orleans or Tulane*

HOW DO WE DECIDE?

- Multiple forecast factors considered:
 - Storm size
 - Storm forward speed
 - Storm surge
 - Storm category
 - Storm direction relative to New Orleans



- Try to announce a decision 2.5-3 days before projected landfall
- Consult with National Hurricane Center, AccuWeather, local meteorologist
- Each storm is unique (*no two storms are the same!*)

SHELTERING IN PLACE

If your student lives **on campus**:

- Residence halls and select other buildings maintain full power, including HVAC
- Students will be provided a three-day supply of shelf-stable food
- Students will **not** be allowed to leave their shelter location from onset of tropical storm-force winds until after damage assessment team completes initial sweep of campus
 - This could last upwards of 24 hours
- Recreation activities (including Reily Center and the library) will be **unavailable**



SHELTERING IN PLACE

If/when your student lives **off campus**:

- Students will need to ensure they have bottled water, non-perishable food, flashlights, batteries, etc. in their homes
- Sheltering on campus cannot be guaranteed
- Very likely they will lose power
 - Could be without power for days – weeks
- Boil water advisory and sewerage pumping station issues possible
- Campus does not reopen immediately



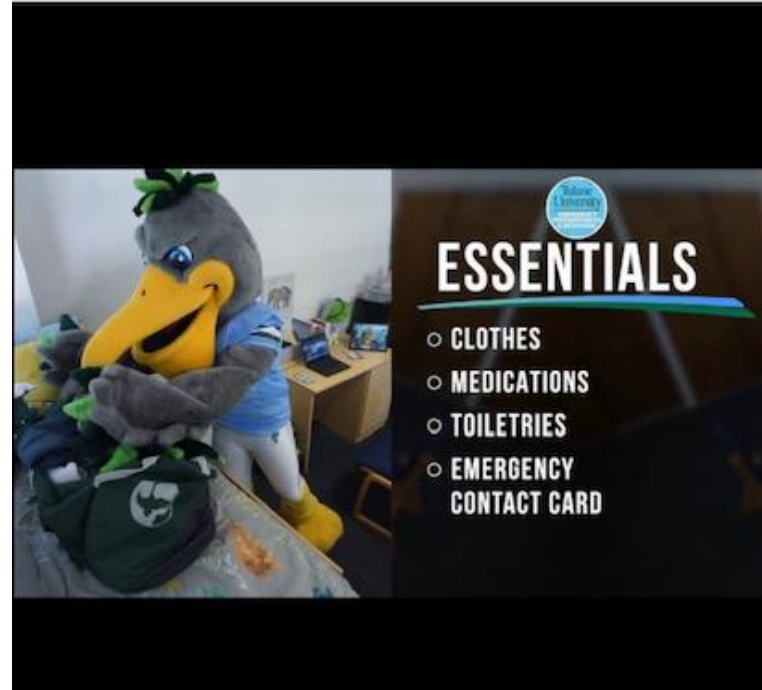
EVACUATION - WHAT TO TAKE

Plan to be gone **at least 5** days

- Clothes, medications (prescription and OTC), sanitation and personal hygiene supplies (don't forget glasses and contacts!)
- Emergency contact list
- Important documents (government IDs, Splash Card, leases/deeds/titles, proof of insurance)
- Necessary items to attend classes remotely/virtually
- Portable chargers, electronic devices and chargers
- Valuables & sentimental items (ex., Rolex watches, cash, family heirlooms, etc.)



tulaneemergency
Tulane University



EVACUATING

- Personal evacuation plans must be submitted by July 15
- Do NOT rely on the university to evacuate your student
 - *WE ARE NOT YOUR PRIMARY PLAN*
 - Tulane will run shuttles to the New Orleans airport until ~1 day before landfall
- Your plan CAN change
 - Ex.: Original plan is you fly your student home/to relatives/to family friends →
 - Change plan for student to evacuate with roommate/friends
 - Ex.: Original plan you pick your student up →
 - Change plan for relative or friend to pick student up



YOUR ROLE IN ADVANCE OF A STORM

You and your student need to decide: *are you comfortable with your student sheltering in place during a tropical storm or hurricane?*

- It is REQUIRED that you have an evacuation plan for your student
- It is OK to evacuate your student before the university announces a decision
 - Your student must communicate with their professors
- It is OK to evacuate your student if the university decides to shelter in place
- It is STRONGLY ENCOURAGED that you ensure your student's belongings are covered under your homeowner's insurance or that your student have renter's insurance
 - <https://www.collegestudentinsurance.com>

YOU & YOUR STUDENT'S PERSONAL EVACUATION PLAN

- Where will your student go?
- When will you and your student make the decision to stay or leave?
- How will your student travel out of the city?
- Who is your student's designated out-of-town contact?
- Remember to include your student's service animal, emotional support animal, or (when your student lives off campus) pets in their plan

YOUR ROLE

- Read university announcements, check <http://emergency.tulane.edu> for all official updates
 - The various parent Facebook pages are **not** official sources of information!
- Watch *local* news (no Weather Channel!)
 - WWL TV
 - Fox8
 - WDSU
- Remind your student to check their Tulane email

POST-STORM ACTIONS

- Students should follow *all* instructions from Tulane administration
 - Instructions and updates will be sent via email
 - Check <http://emergency.tulane.edu> for latest information
- Students should *NOT* return to any of the university's campuses or buildings until expressly told by the university that they may do so
 - Buildings may have power but that does not mean they are safe to occupy
- Students should be prepared to attend classes remotely for multiple days or longer post-storm

Questions on how to #beTUready?



CONTACT US

Follow us on social media @TulaneEmergency

Check out our website: emergencyprep.tulane.edu



Emergency Preparedness & Response Staff

- Jason Ferguson, MPH, Executive Director Emergency Management ferguson@tulane.edu
- Meredith Beers, PhD, MPH, Associate Director Business Continuity meredith@tulane.edu
- Donald Veals, LEM, Assistant Director of Emergency Response Systems donald@tulane.edu
- Department email emergencyprep@tulane.edu

Thank you and #beTUready

