



KNOW BEFORE THEY GO: PARENT PRE-DEPARTURE ORIENTATION

Session Leaders:
NTC Office of Study Abroad

Tulane

 **TULANE**
Newcomb-Tulane College
Center for Global Education

External Application

Tulane application: verifies that student has met all internal requirements to study abroad through Tulane



Secondary application: student applies for admission to their chosen program based on the program's external requirements



TWO OFFICES,
ONE GOAL

Office of Study
Abroad (OSA)

- All Majors

Freeman
Abroad

- Business
Majors Only

Business majors who
want to complete non-
business requirements
OR on Freeman approved
programs

A collage of various international banknotes, including US dollars, Mexican pesos, and Japanese yen, scattered across the frame. The notes are overlapping and slightly blurred, creating a sense of abundance and global finance. A dark, semi-transparent rectangular box is centered over the image, containing white text.

TUITION AND BILLING
NTC OFFICE OF STUDY ABROAD

Home School Tuition Model

- While abroad on a Tulane-approved program, students continue to pay **Tulane tuition and fees and the Academic Support Fee at the full-time student rate.**
- Housing, meals, and insurance are typically paid directly by the student to the provider or independently depending on the program.



How Does Billing Work?

Tuition:

- All approved students will be automatically registered by our office in a 12-credit hour placeholder course.
- Billing through Accounts Receivable and disbursement of scholarships and financial aid occur based on this placeholder course.
- Students are not responsible for paying tuition cost to their provider or host university, Tulane pays the program on your behalf, you pay tuition through Accounts Receivable.

Housing:

- Student pays cost of housing and insurance to the program directly in most cases.
- Students can still use financial aid to cover housing costs abroad—speak to your Financial Aid Advisor
- A few programs (EDUCO Paris, REUNIDAS Madrid, BCSP) will have certain housing/insurance costs billed via Tulane.
- Independent housing UNLIKELY

Why do we use this model?

- Allows federal aid to still apply; students with scholarships still retain their scholarships
- Ensures students obtain General Elective Credit for all courses they take
- Health, Safety, and Security
- Gives students access to on-campus support:
 - Our office
 - Success Coaching
 - Tutoring
 - Academic Advising
 - And More

A photograph of a grand, historic library. The room features a high, vaulted ceiling with intricate wooden ribbing. On either side, tall wooden bookshelves are filled with books, topped with dark metal railings. In the center, a long study table is surrounded by wooden chairs. The lighting is warm and ambient, highlighting the architectural details and the vast collection of books.

ACADEMICS

NTC OFFICE OF STUDY ABROAD

Course Transfer

- Courses transfer automatically as general electives. Major, minor, or core credit can be awarded through their department
 - Grades from abroad will appear as letter grades on their transcript but will not be factored into their GPA
- Students should meet with their advisors during the application process to discuss prospective courses.
- Freeman students can participate on OSA programs, but they usually cannot earn Freeman credit. Some Freeman students choose to participate in OSA programs to earn NTC Core or general credit.

While Abroad with Tulane

- Students must maintain full-time Tulane enrollment – 12 US Credit Hours
- Pass/Fail policy – students must alert OSA within 10 weeks of program start date if they want to S/U a course
- We enroll them in a placeholder course
- GPA requirements at host institution may be higher for particular majors, courses, or programs – advisors discuss with students, but students should still confirm
- Students are still held to Tulane's academic and disciplinary policies

While Abroad: Coursework Expectations

- Courses may not be finalized until on site
- Remind students to keep all syllabi and coursework
- Classroom expectations and norms can vary –
 - there may be fewer assignments (only midterm/final)
 - more lecture-heavy
 - stricter attendance policy
 - less grade inflation
- Classes can be MORE challenging than at Tulane – this is not a vacation
- Self-management and independence is key

A scenic view of a Venetian canal at dusk. The water is a deep blue, reflecting the warm yellow lights from the buildings and street lamps. Historic buildings with arched windows and balconies line both sides of the canal. A gondola with several people is in the middle of the canal. The sky is a mix of dark blue and lighter clouds. The text "TRAVEL LOGISTICS" and "NTC OFFICE OF STUDY ABROAD" is overlaid in white on a dark semi-transparent background in the center.

TRAVEL LOGISTICS
NTC OFFICE OF STUDY ABROAD

BOOKING TRAVEL

Tulane students are required to book through Tulane's travel provider, World Travel Services, in order to have Tulane support in the case of needed evacuation or ticket changes due to on-site emergencies. Students can find information on booking through World Travel on our website and **in their acceptance letter**.

- Blocks non-refundable fares and budget airlines on portal
- Mandatory in all cases in the exception of miles -- students must petition for approval by Tulane Travel Management by emailing travel@Tulane.edu
- Travel agent option available

PASSPORTS AND VISAS

- Passport: their passport must be valid for *at least six months* after their study abroad program **ends**
 - If they do not have a passport or need to renew do so NOW and pay for expedited service
- Visa: applying for a visa is **their** responsibility
 - Visa requirements vary by host country, citizenship, and consulate location
 - Visit consulate website for information, provider may offer some guidance
 - We are not able to consult on student visa requirements, nor do we have any sway with immigration or consulates
 - May require your bank statements (potentially notarized)
- **Summer/winter travel may conflict with visa appointment**

A stethoscope is positioned over a world map, with its chest piece resting on the map of Africa. A semi-transparent black rectangular box is centered over the map, containing the text "HEALTH AND SAFETY ABROAD" in large white capital letters, and "NTC OFFICE OF STUDY ABROAD" in smaller white capital letters below it.

HEALTH AND SAFETY ABROAD

NTC OFFICE OF STUDY ABROAD

Safety and Security

Before they go:

- Student is enrolled with Crisis24 when they book through Tulane
- [Travel.state.gov](https://travel.state.gov) for information about their destination
- Enroll in STEP: Smart Traveler Enrollment Program through the US Department of State

Health Abroad

- Begin researching on-site support available to students
- Research local conditions that may impact health
- Encourage your student to report **any and all** Goldman Center accommodations to us and their program ASAP. Even if they don't end up using it – it is better to have it requested *early*
- Plan a method to stay in touch with healthcare providers – therapists, PCPs, specialists, etc.
- Research medication laws for host country
 - Not all medications are legal to import to all countries
 - Students should plan to bring a FULL supply for their whole program

Insurance

- Students are required to demonstrate both domestic **and** international insurance while abroad.
- Three options for coverage:
 - Chubb (All Tulane travellers): Master Policy No. GLM N186660489R
 - Program insurance
 - Intl options through domestic provider
- **STUDENTS MUST COMPLETE ANNUAL HEALTH INSURANCE WAIVER.**



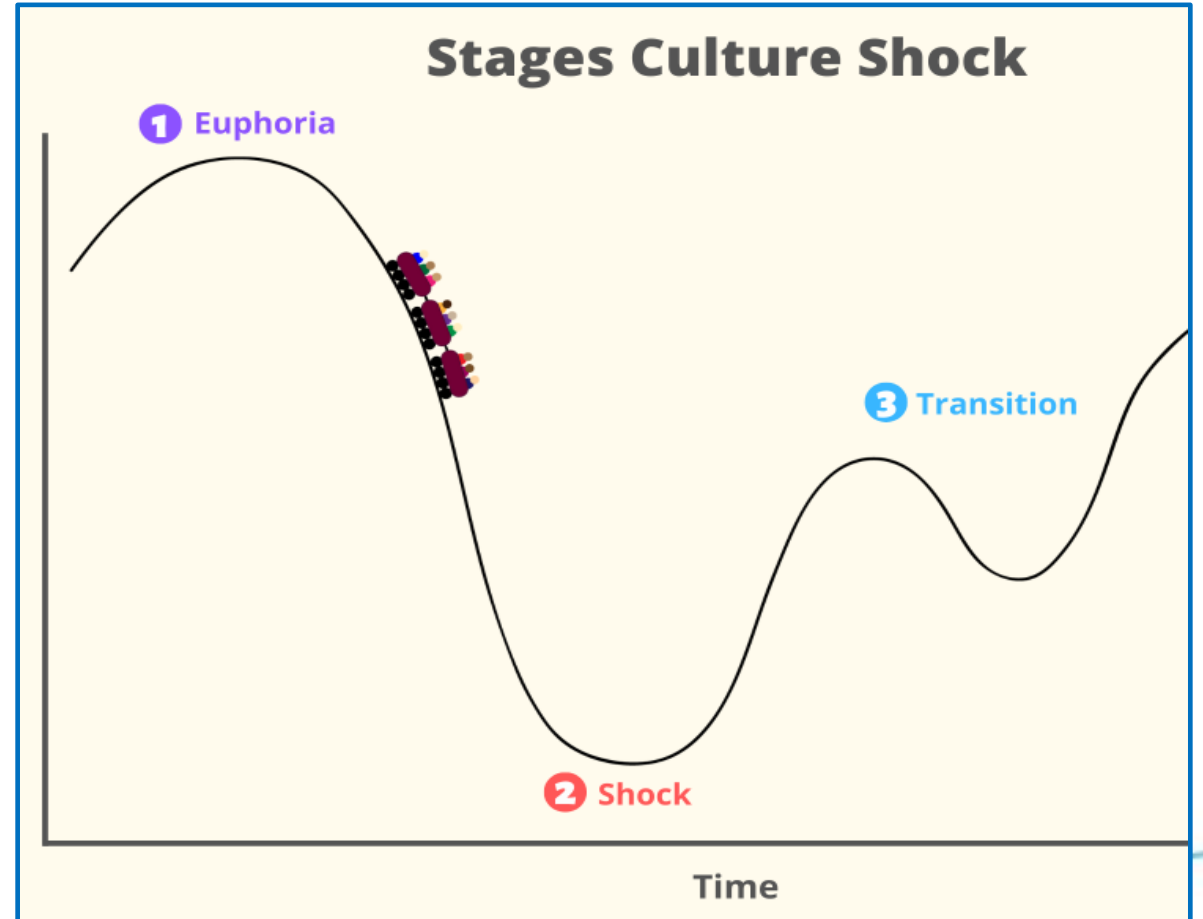


LIFE ABROAD

NTC OFFICE OF STUDY ABROAD

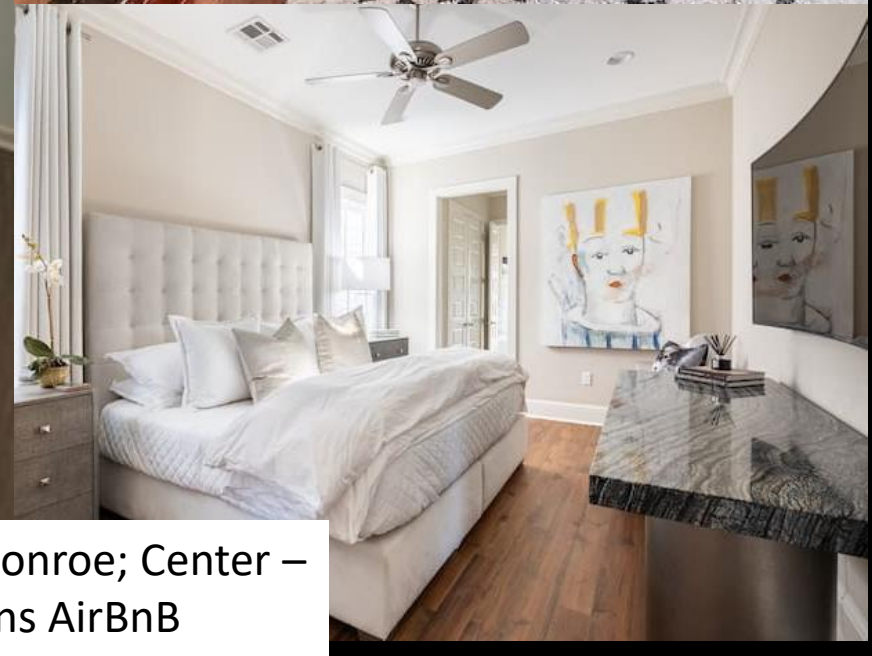
CULTURE SHOCK

- Your student is likely to go through this, no matter how different or similar their host country is
- As advisors, the “shock” stage is also where we get the most amount of calls – you will too!
- Encourage a Growth Mindset through “Yet” language. This can frame a negative into a positive.
- “I don’t know what the professor is saying in class and I can’t keep up.” -> “I hear you and that’s frustrating. But as you keep going to class, you’ll get more and more practice and it’ll be easier. You just haven’t gotten there yet.”



Housing Abroad

- Students should understand that housing abroad may not be parallel to housing in New Orleans.
- Provided housing meets Tulane safety standards. Outside of safety, housing is culturally varied location to location.
- Students studying in major cities should anticipate a commute of at least 30 minutes. 40+ minutes is considered a normal commute in many major cities abroad.
 - Public transit outside of the U.S. is nearly always better than the U.S.
- Try not to compare housing—unless they are in a dorm, their classmate's homestay or apartment might not be identical. No living situation is perfect; people are more likely to post/share the positives than the negatives.
- Problem with their housing? They should reach out to their program provider first. Try not to make any big decisions within the first few weeks of the program when they're already adjusting.
- Independent/"off-campus" housing is ONLY allowed when living with direct family.



Housing examples for context: Left – Tulane on-campus, Wall and Monroe; Center – house found on Offcampushousing.tulane.edu; Right – a New Orleans AirBnB

HOUSING AND ACCOMMODATIONS

On-file Medically Approved Needs

- Goldman Center can provide a letter detailing your needs for your program.
- Most programs can accommodate documented needs.

New Requests

- Requires medical documentation and filing.
- Goldman Center interactive process required between student, Goldman Center, and program.

Independent Housing

- Available if program housing can't meet needs (after Goldman and OSA consultation).
- On-site staff has final approval.

Life Abroad

Making friends

- Being “alone” is *not* a complaint we receive from students
- Students from both Tulane and other U.S. based universities participate on these programs
- Opportunity to make new friends with U.S. students AND students from their host country
- Remind them of their Freshman year – maybe they knew some people coming into Tulane, maybe they didn’t, but they likely have friends now – it will be similar abroad
- Build a global network
- With around 50% of Tulane students going abroad, there are likely to be familiar faces either on program or in town

Airport Travel

- Some programs have airport pickup, some do not. They should know HOW they are getting to their program
- Have your student save the address of where they are going in their phone AND on paper
- Remind them to pack essentials in travel on, not in checked luggage – especially medication.

Life Abroad

Independent Travel

- FOMO vs Academics – it is STUDY abroad. Students do/have/will fail courses for missing class to travel.
- Environmental impact – ONE student doing weekly weekend trips from Madrid to a new city in Europe every weekend is [NUMBER HERE] of environmental damage
- Cost – Ryanair flights may be cheap, but hostels, food, adds up

Academic calendar

- Understand exam schedule, start/end dates – many finals go late in the semester and host institutions are unlikely/unwilling to allow early exams. Students should stay through finals.

Student identity abroad

- We have many resources in our office and can talk with students about their identity abroad: race, gender, religion, sexuality, socioeconomic status, etc.
- Politics + election – students have been sent Tulane Undergraduate Assembly's "how to" page on voting from abroad.
- Staff can talk to your students and connect them

Life Abroad

Talking Abroad

- Your student should consider purchasing a local SIM card for their unlocked phone. This is often cheaper than international plans available through domestic providers.
- Wifi-based calls can often be less expensive – we recommend WhatsApp or FaceTime Audio
- Peer Advisor Suggestion: A shared virtual photo album, where your student can upload photos to send to you when they can't talk

Money Abroad

- Students should research the money culture of their host country before going – cash or credit?
- Help them set a budget that includes souvenirs, travel, toiletries, etc.

Food Abroad

- If a student lives in a homestay, 2-3 daily meals will be provided.
- Students should research whether they can cook for themselves or if they will eat out
- If your student has a specific diet, they should research their host country in advance to see if it's easy to continue while abroad

Life Abroad

Labor Action

- Some countries have very strong labor rights and strikes may occur. This can impact classes if the university goes on strike.
- Do not encourage your student to attend any demonstrations.

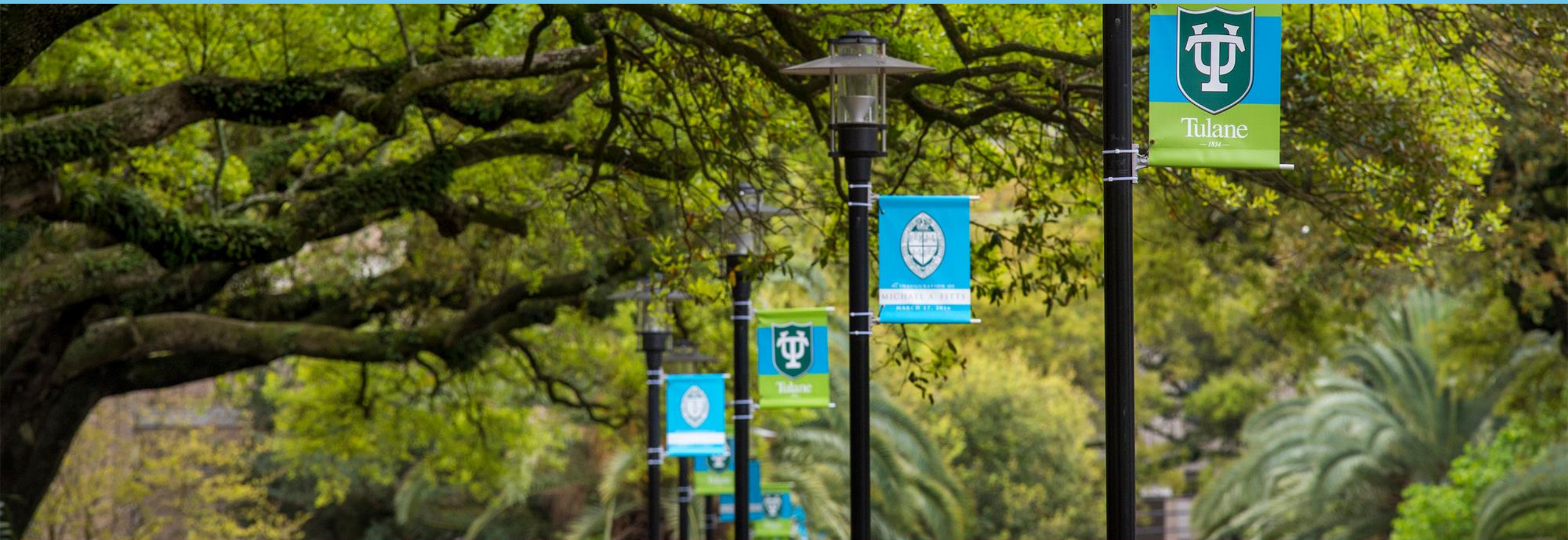
Contacting On Site Staff

- You should empower your student to be the first one to reach out to on-site staff. The staff know the students AND are in the same time zone
- Due to local laws, some staff may not be able to talk to you.

Other

- Encourage your student not to overpack! This is one of the top things students regret doing
- Service/emotional support animals – Your student should speak to OSA and their host program and university ASAP. Some animals may need additional vaccinations; some countries may not be able to accommodate
- Encourage your student to get off social media as much as possible – comparison is the thief of joy.
- Visiting them – have fun!

Questions? osa@tulane.edu



Tulane