

EMERGENCY PREPAREDNESS & RESPONSE

WEDNESDAY, JUNE 18, 2025, 6 PM CENTRAL

Tulane

PANELIST:

Meredith Beers, PhD, MPH, LEM

Associate Director Emergency Preparedness & Response
Office of Emergency Preparedness & Response

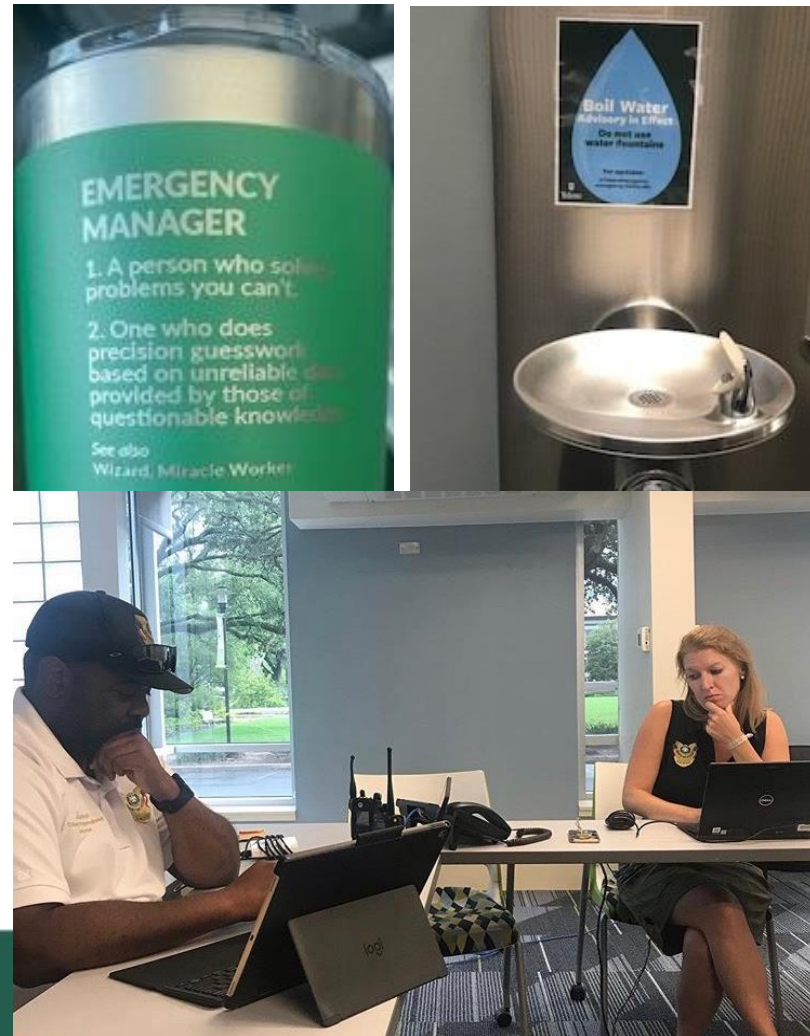
MODERATOR:

Penny Wyatt

Director, Parent Programs and External Relations
Division of Student Affairs

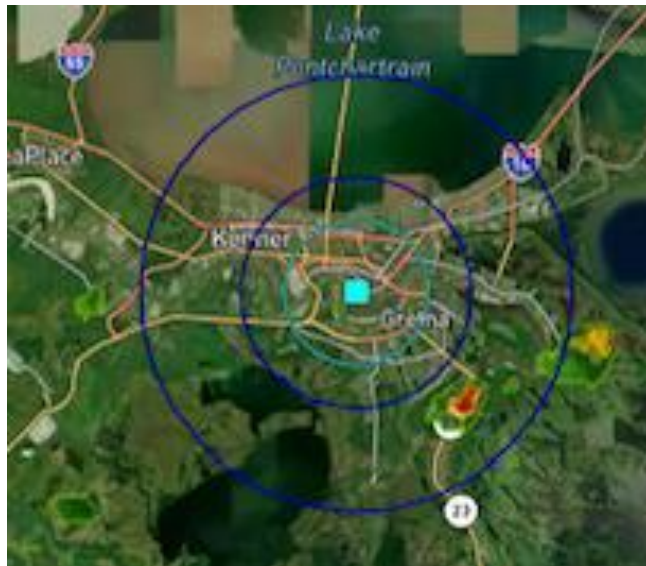
EMERGENCY PLANNING

- We help prepare, help prevent, and respond to incidents
- We prepare for all hazards
- Our plans are flexible and scalable
- Our number one goal is to protect the life safety of our students, faculty, and staff



ALL-HAZARDS PREPAREDNESS

- Each year we prepare for the most likely scenarios
- Example hazards:
 - Active shooter
 - Boil water advisories
 - Fire, bio/chemical spill
 - **Hurricanes**
 - Pandemics
 - Power outages
 - Severe weather
 - And much more!

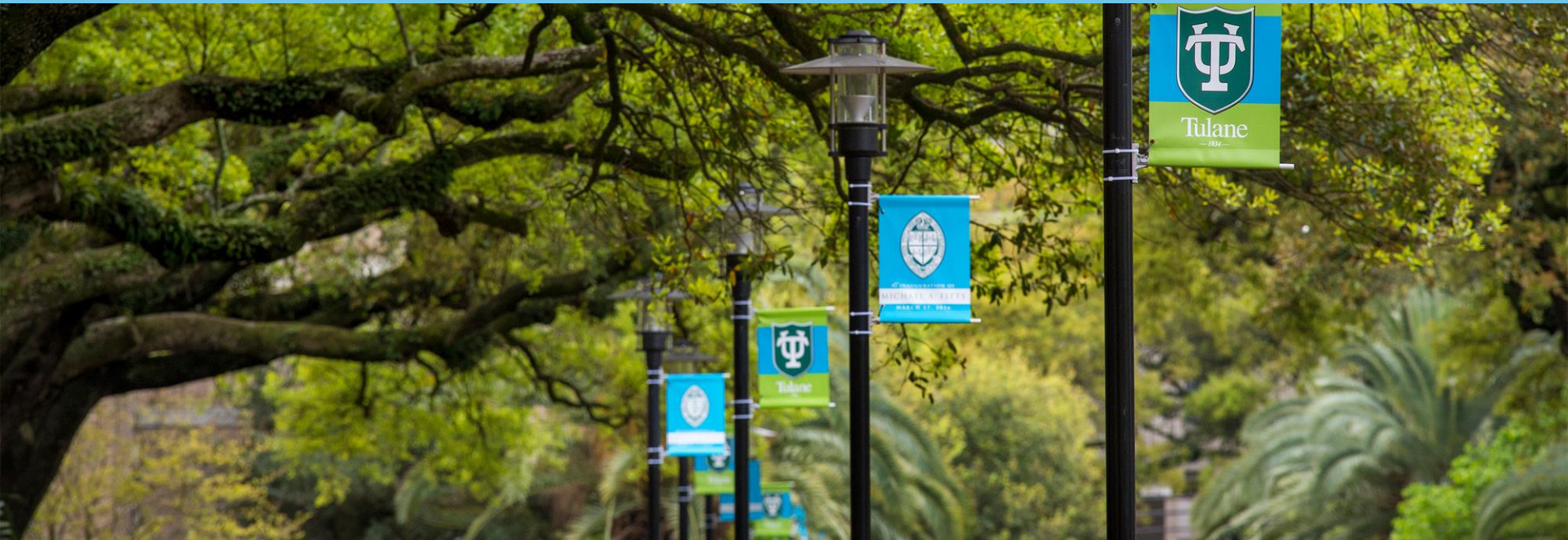


Tulane University: T U ALERT: A tornado WARNING has been issued for our area. Remain in/seek shelter in the nearest building immediately.
nixle.us/DHAHA

Tulane University: T U ALERT: Tornado Warning All Clear nixle.us/DHAJ2



Stay Connected to #beTUready



Tulane

HURRICANE COMMUNICATIONS WITH *FAMILIES*

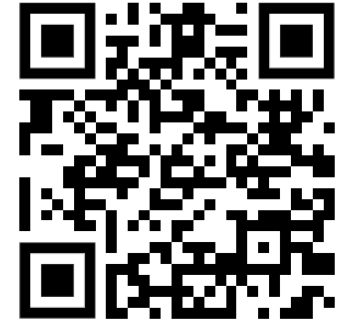
Email



Emergency Webpage



Tulane Today



Social media: @TulaneU and @TulaneEmergency

HURRICANE COMMUNICATIONS WITH *STUDENTS*

PRIMARY METHODS

- Email (Tulane-assigned email address)
- Emergency website: <http://emergency.tulane.edu/>
- Mass Notification Communication System – “TU Alert”
 - Text Messages (students are automatically enrolled)
 - Email (students are automatically enrolled)
 - Everbridge App (students should download this app)

HURRICANE COMMUNICATIONS WITH *STUDENTS*

SECONDARY METHODS

- Housing & Residence Life and Dining Services will communicate with students via their Tulane email addresses
- Social Media
 - @TulaneEmergency on Instagram
- Students **must** follow directions from university officials, including Student Affairs & TUPD

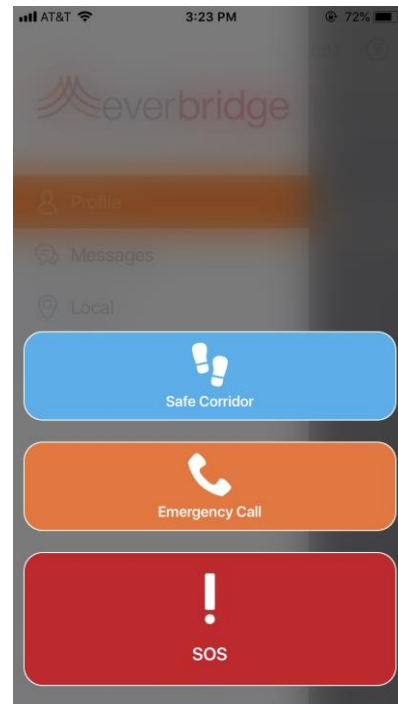
TEXT ALERTS

- Your student should log into Gibson
- Look under “Records”
- Use the link to confirm or correct **their own** contact information (including cell phone number!)

The screenshot shows the Gibson student portal. At the top is a dark green navigation bar with the Gibson logo and links for Home, Student, Staff, Billing, and Financial Aid. Below this, the 'Records' section is highlighted in light blue. It contains links for Clearinghouse, Service Wave, Handshake, and TULearn (Bridge). Under the 'Records' heading, there is a list of links: Schedule of Classes, Register (Add/Drop), Course Evaluations, TU Enrollment Verification, View TU Enrollment Verification, Order an Official Transcript, Unofficial Transcript, Update Confidentiality Options, Update Address, Phone & Email (highlighted with a green box and a green arrow), Update Emergency Contacts, Update Preferred First Name and/or Preferred Pronoun, and Resources. The 'Resources' section includes links for Human Resources and Student Employment. To the right of the 'Records' section, there is a 'View Online Account' section with links for Account Activity & eBills, Payment Options & History, Refund Disbursement, and Authorized User Signup. Further right is a 'Request a Refund' section with a link to Request a Refund and a brief description. Below these sections is a 'Degree Works Audit' section with links for Academic Advisor (Amanda Hassan) and Major Advisor(s) (Michael Wallace), and a 'Degree' field showing Master Professional Studies. A 'View Audit' button is present. At the bottom, there is a blue banner for 'Attention Student Workers' with text about updating home address by December 31 for filing income taxes, and a link to verify and update mailing address.

EVERBRIDGE APP

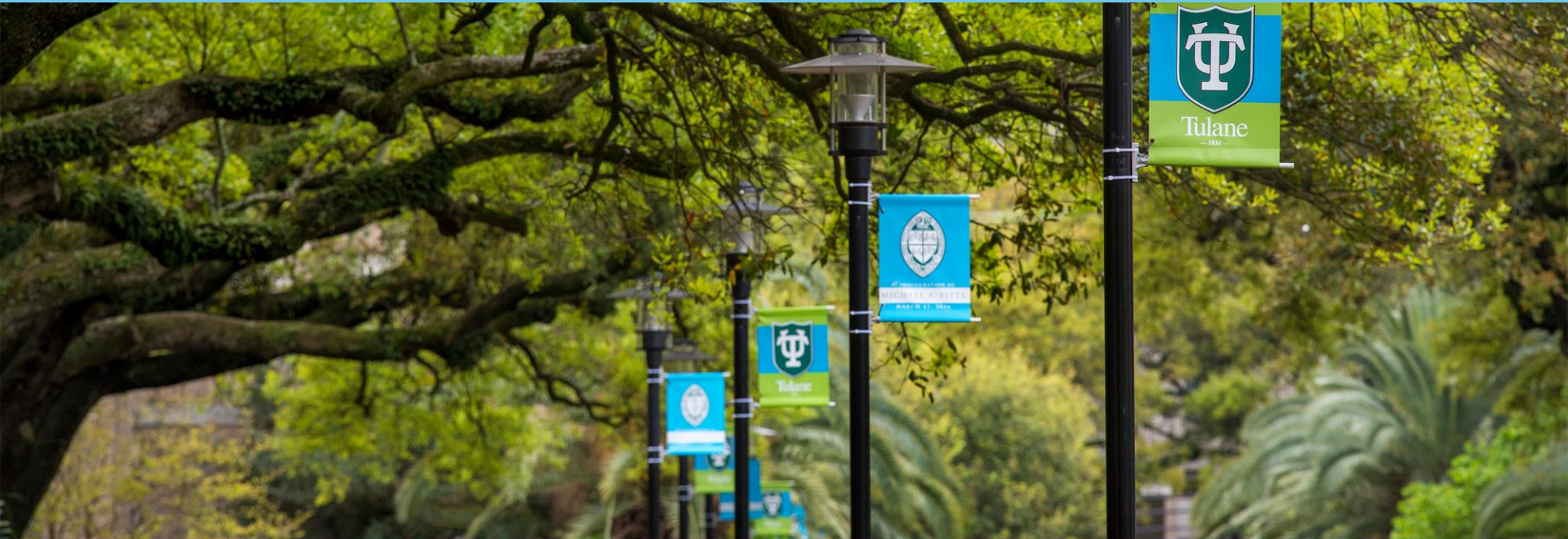
- Available in the Apple and Android store
- Free to Tulane students, faculty, and staff who have a tulane.edu login
 - Family members, this won't work for you
 - ****please note that your student will not be able to log in until move-in in August*
- Additional safety features:
 - Safe Corridor
 - Emergency Call
 - SOS



OPT-IN ALERTS DURING MOVE-IN

Text TUMoveIn to 888777

Hurricane Preparedness



HURRICANE 101

Hurricane season: June 1 – November 30

Atlantic Ocean –

- See these form 7+ days before landfall
- ~5 days before landfall start to have a good sense of the storm's projected path

Gulf of Mexico –

- See these form ~4 days before landfall
- Decision to close and evacuate or close in shelter in place made as soon as possible once projected path forecast



HURRICANE 101

Hurricane Hazards

- High winds
- Storm surge
- Heavy rainfall and inland flooding

Hurricane Impacts

- Power outages
- Loss of internet service
- Water & sewerage pumping station problems resulting in boil water advisories
- Flooding
- Supply chain disruption/interruption
- Fuel shortages



WHAT WILL TULANE DO?

Close and Shelter in Place

- Transition to online/remote classes or cancel classes, cease normal business operations, and shelter on-campus residents in their residence halls
- Expected impacts to New Orleans and Tulane are manageable

We will run shuttles to the airport

Close and Evacuate

- Cancel classes, cease normal business operations, and everyone **MUST** evacuate
- Expected impacts to New Orleans and Tulane are significant
 - We can declare a mandatory evacuation even if the City of New Orleans does not

We will run shuttles to the airport

Continue Normal Operations

- Storm forecast area does not include New Orleans
- No expected impacts to New Orleans or Tulane

HOW DO WE DECIDE?

- Multiple forecast factors considered:
 - Storm size
 - Storm forward speed
 - Storm surge
 - Storm category
 - Storm direction relative to New Orleans
- Try to announce a decision 2.5-3 days before projected landfall
- Consult with National Hurricane Center, Perry Weather, local meteorologist
- Each storm is unique (*no two storms are the same!*)



SHELTERING IN PLACE

If your student lives **on campus**:

- Residence halls and select other buildings maintain full power, including HVAC
- Students will be provided a three-day supply of shelf-stable food
- Students will **not** be allowed to leave their shelter location from onset of tropical storm-force winds until after damage assessment team completes initial sweep of campus
 - This could last upwards of 24 hours
- Recreation activities (including Reilly Center and the library) will be **unavailable**



SHELTERING IN PLACE

If/when your student lives **off campus**:

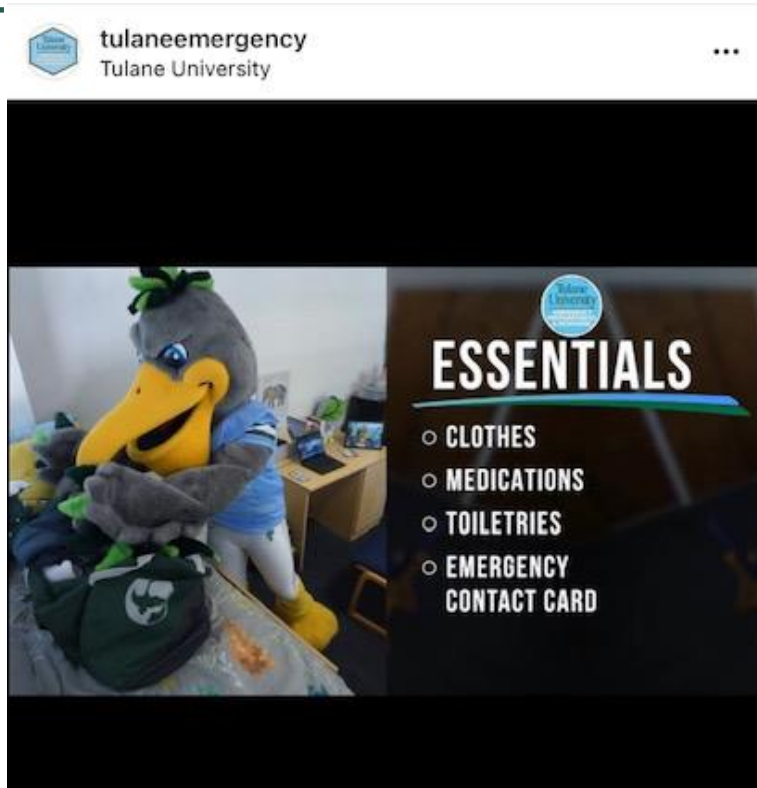
- Students will need to ensure they have bottled water, non-perishable food, flashlights, batteries, etc. in their homes
- Sheltering on campus cannot be guaranteed
- Very likely they will lose power
 - Could be without power for days – weeks
- Boil water advisory and sewerage pumping station issues possible
- Campus does not reopen immediately



EVACUATION - WHAT TO TAKE

Plan to be gone **at least 5** days

- Clothes, medications (prescription and OTC), sanitation and personal hygiene supplies (don't forget glasses and contacts!)
- Emergency contact list
- Important documents (government IDs, Splash Card, leases/deeds/titles, proof of insurance)
- Necessary items to attend classes remotely/virtually
- Portable chargers, electronic devices and chargers
- Valuables & sentimental items (ex., Rolex watches, cash, family heirlooms, etc.) – we recommend not bringing these items to college



EVACUATING

- Personal evacuation plans must be submitted in the Housing Portal by May 22
- Do NOT rely on the university to evacuate your student
 - *WE ARE NOT YOUR PRIMARY PLAN*
 - Tulane will run shuttles to the New Orleans airport until ~1 day before landfall
- Your plan CAN change
 - Ex.: Original plan is you fly your student home/to relatives/to family friends →
 - Change plan for student to evacuate with roommate/friends
 - Ex.: Original plan you pick your student up →
 - Change plan for relative or friend to pick student up



YOUR ROLE IN ADVANCE OF A STORM

You and your student need to decide: *are you comfortable with your student sheltering in place during a tropical storm or hurricane?*

- It is REQUIRED that you have an evacuation plan for your student
- It is OK to evacuate your student before the university announces a decision
 - Your student must communicate with their professors
- It is OK to evacuate your student if the university decides to shelter in place
- It is STRONGLY ENCOURAGED that you ensure your student's belongings are covered under your homeowner's insurance or that your student have renter's insurance
 - <https://www.collegestudentinsurance.com>

YOU & YOUR STUDENT'S PERSONAL EVACUATION PLAN

- Where will your student go?
- When will you and your student make the decision to stay or leave?
- How will your student travel out of the city?
- Who is your student's designated out-of-town contact?
- Remember to include your student's service animal, emotional support animal, or (when your student lives off campus) pets in their plan

YOUR ROLE

- Read university announcements, check <http://emergency.tulane.edu> for all official updates
 - The various parent Facebook pages are **not** official sources of information!
- Watch *local* news (no Weather Channel!)
 - WWL TV
 - Fox8
 - WDSU
- Remind your student to check their Tulane email

POST-STORM ACTIONS

- Students should follow *all* instructions from Tulane administration
 - Instructions and updates will be sent via email
 - Check <http://emergency.tulane.edu> for latest information
- Students should *NOT* return to any of the university's campuses or buildings until expressly told by the university that they may do so
 - Buildings may have power but that does not mean they are safe to occupy
- Students should be prepared to attend classes remotely for multiple days or longer post-storm

Questions on how to #beTuready?



CONTACT US

Follow us on social media @TulaneEmergency

Check out our website: emergencyprep.tulane.edu

Emergency Preparedness & Response Staff

- Jarrod Sullivan, Executive Director jsulliv@tulane.edu
- Meredith Beers, PhD, MPH, LEM meredith@tulane.edu
- Donald Veals, LEM donald@tulane.edu
- Department email emergencyprep@tulane.edu



Thank you and #beTUready



Tulane